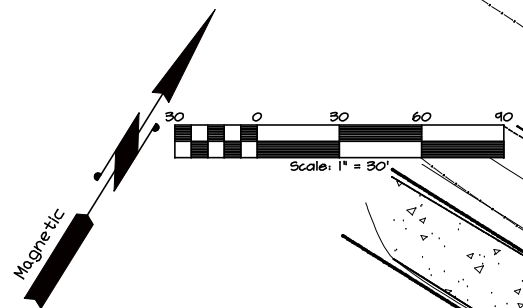
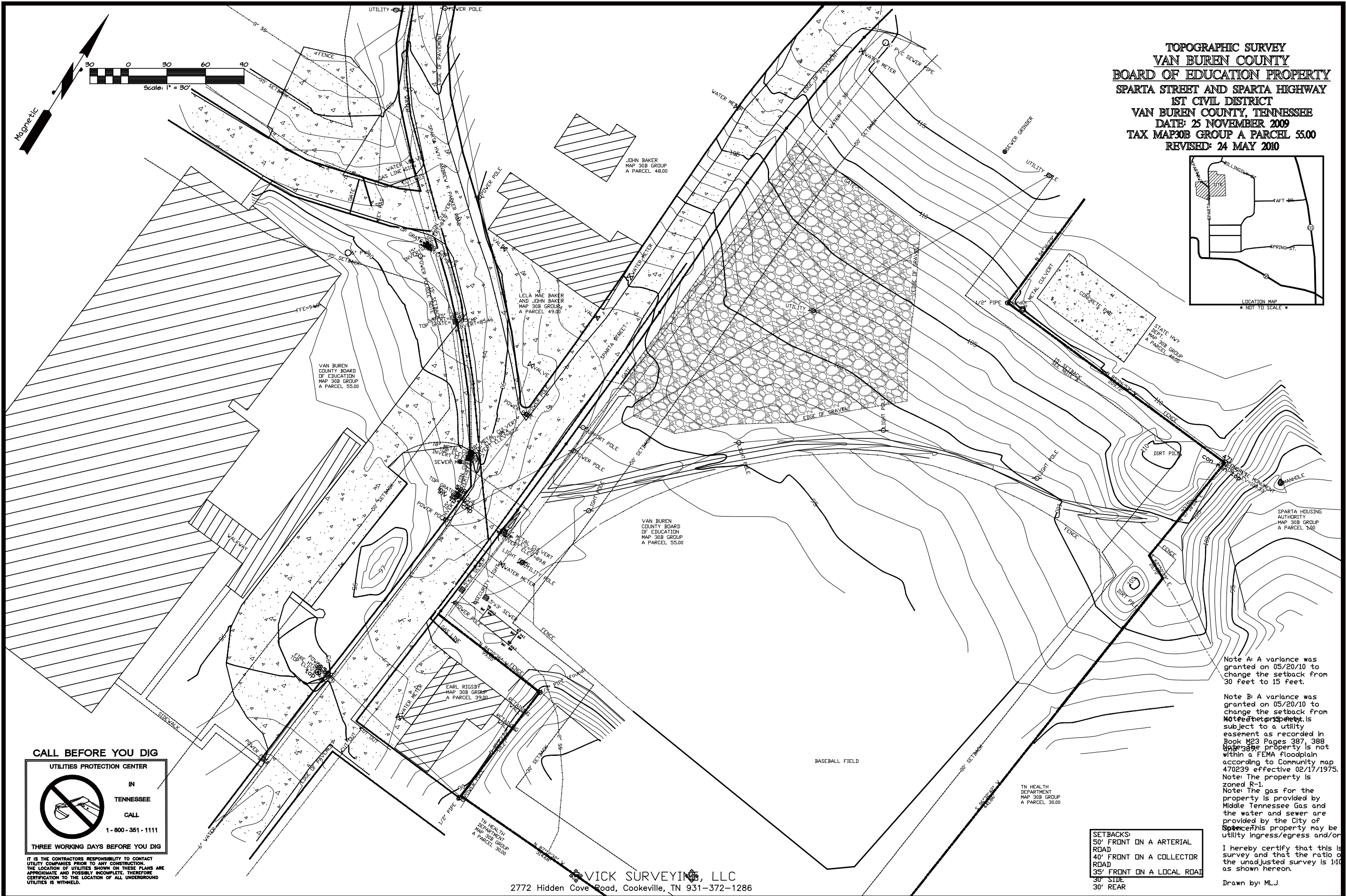


TOPOGRAPHIC SURVEY
 VAN BUREN COUNTY
 BOARD OF EDUCATION PROPERTY
 SPARTA STREET AND SPARTA HIGHWAY
 1ST CIVIL DISTRICT
 VAN BUREN COUNTY, TENNESSEE
 DATE: 25 NOVEMBER 2009
 TAX MAP 30B GROUP A PARCEL 55.00
 REVISED: 24 MAY 2010



Note A: A variance was granted on 05/20/10 to change the setback from 30 feet to 15 feet.

Note B: A variance was granted on 05/20/10 to change the setback from 30 feet to 15 feet. This property is subject to a utility easement as recorded in Book M23 Pages 387, 388. This property is not within a FEMA floodplain according to Community map 470239 effective 02/17/1975. Note: The property is zoned R-1. Note: The gas for the property is provided by Middle Tennessee Gas and the water and sewer are provided by the City of Sparta. This property may be utility ingress/egress and/or

I hereby certify that this is a true and correct copy of the original survey as shown hereon.

Drawn by: MLJ

CALL BEFORE YOU DIG



IT IS THE CONTRACTOR'S RESPONSIBILITY TO CONTACT UTILITY COMPANIES PRIOR TO ANY CONSTRUCTION. THE LOCATION OF UTILITIES SHOWN ON THESE PLANS ARE APPROXIMATE AND POSSIBLY INCOMPLETE. THEREFORE CERTIFICATION TO THE LOCATION OF ALL UNDERGROUND UTILITIES IS WITHHELD.

SETBACKS:
 50' FRONT ON AN ARTERIAL ROAD
 40' FRONT ON A COLLECTOR ROAD
 35' FRONT ON A LOCAL ROAD
 30' SIDE
 30' REAR